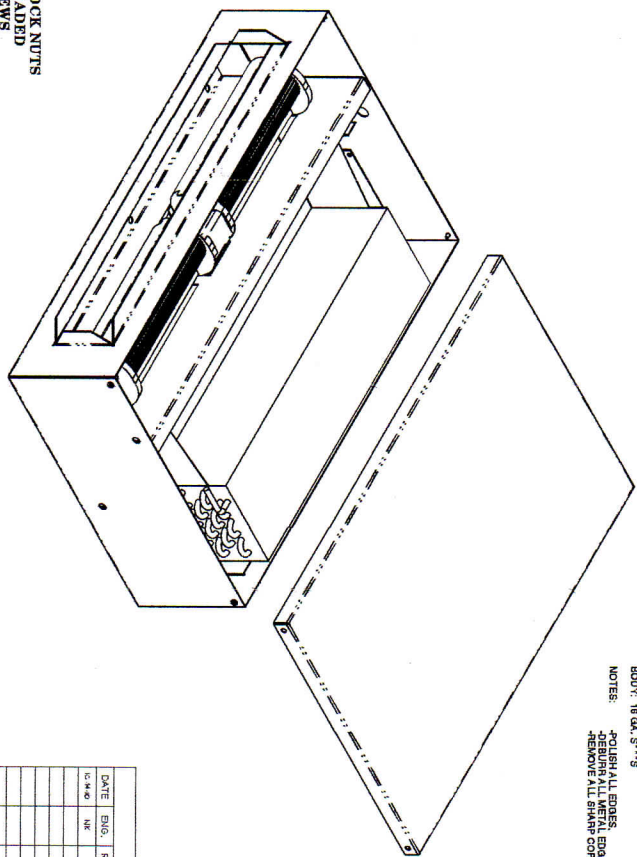
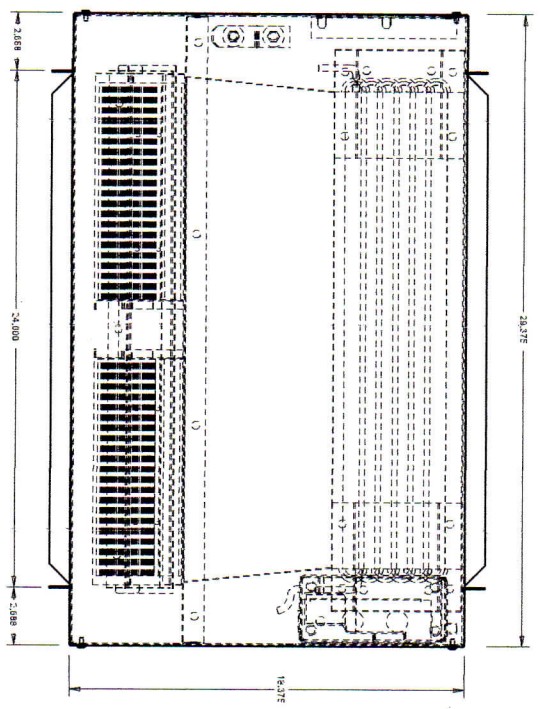


REV	QTY	UNIT	REV CODE	DESCRIPTION	VENDOR NAME	PARTNO/DEL. NUMBER	PART TYPE
1	EA	BI		BLMP PUMP P/N FC13A	BENNETT COMP.	Q-40288P01	PART
2	EA	BI		DUAL SQUIRREL CAGE FAN ASSY	ELCANIA	DEL-FC042C-04HL	PART
3	EA	BI		LEVEL SWITCH	ELC	Q-40288S2	PART
4	EA	BI		EVAP. COIL 27" X 6" X 1/4"	TBD		PART

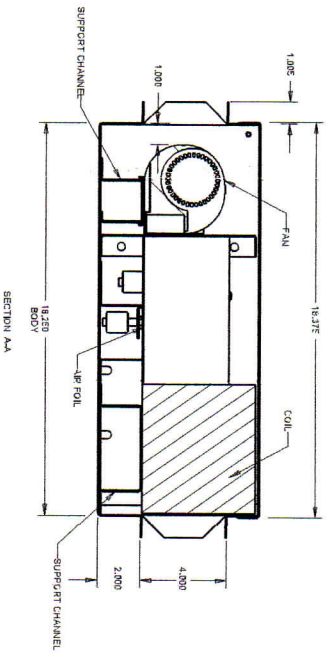
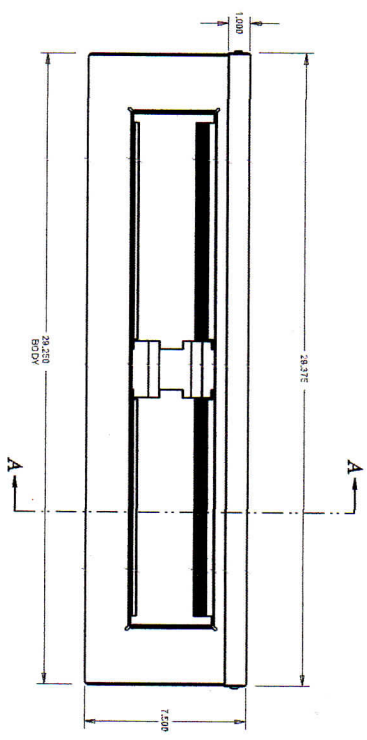
PURCHASED ITEMS

**NOTE: ALL BILL-OF-MATERIAL ITEMS ARE FOR REFERENCE ONLY,
PURCHASED BY OTHERS & INSTALLED ELSEWHERE**



TOP: 18 GA. S775
 BODY: 18 GA. S775
 NOTES:
 -POLISH ALL EDGES.
 -REMOVE ALL METAL EDGES.
 -REMOVE ALL FINN CORNERS & EDGES.

**NOTE: USE NYLOCK NUTS
ON ALL THREADED
STUDS & SCREWS**



DATE	ENG.	REV.#	REVISION
12/10/08	NK	1	ISSUE FOR PRODUCTION

**QUADRA-TECH
WINE COOLER**

Part # D874-01-50
 Rev. 1 of 2
 Date: 08-03-10

